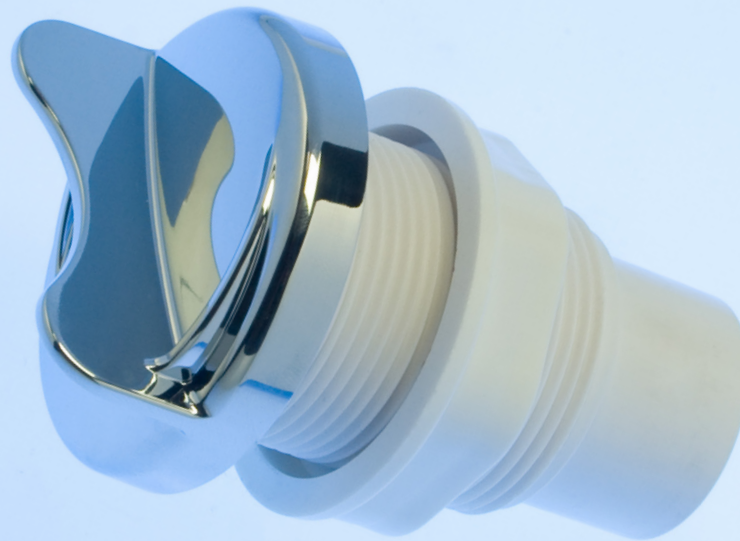




Engineered and supported
by people you trust



Aromatherapy

NuWhirl’s Aromatherapy canister is a four-part plumbing assembly that allows bathers to easily insert and replace personalized bath scents to maximize the enjoyment of the whirlpool bath experience.

Features and Benefits

“Easy Grip” Cap The filler cap is designed to be easily gripped (twist to open) when accessing the scent cartridge.

Specialized Canister The canister is designed to maximize the aroma dispersed in the bath. It accommodates the most commonly available scent cartridges.

Standard Tee Installation Allows for flexibility in plumbing configurations on pressure and vacuum lines using a standard tee.

Easy to Purchase

Conveniently sold as parts or as a “kit”

In stock and ships with other NuWhirl products

No minimum order quantity

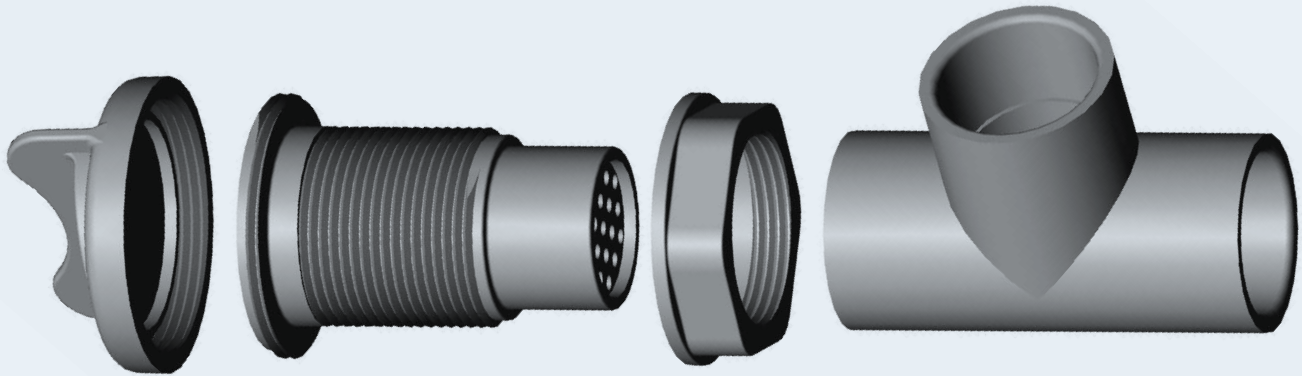
Colors: white, bone, biscuit and chrome

Exceptional service support: Aromatherapy is supported by the best engineering, sales and customer care in the Whirlpool Bath industry.



Engineered and supported
by people you trust

Aromatherapy Assembly



2003XX Cap
Diameter: 2-3/8"
Height: 1-1/8"

400114 Canister
Diameter: 1-5/8"
Hole Saw: 1-11/16"
Length: 2-7/8"
Fitting: 1" Pipe Spigot

300110 Nut
Thickness: 0.6"
Wrench Flats: 1-15/16"

401010 Tee
1" Schedule 40 PVC

Cap available in the following colors



White 01 Bone 02 Biscuit 03 Chrome 60

Ordering

Available as a kit or as separate parts
(replace XX with color number above)

ATH-XX Kit
2003XX Cap
400114 Canister
300110 Nut
401010 Tee

Installation

Hole Size: 1-11/16"
Tub Wall: Accommodates up to 1-1/14" Thick
Body: Projects 2-5/8" from front of wall
(before tee attachment)

contact us to learn why we are the industry's preferred jetted tub supplier

nuwhirl.com | 951 817 5600 | 2066 California Avenue, Corona, CA

10/2012